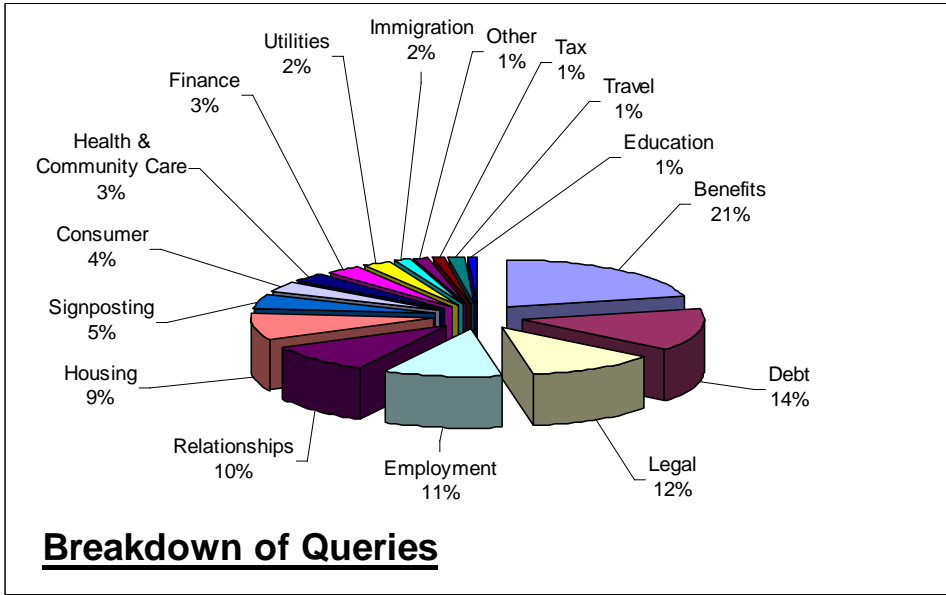


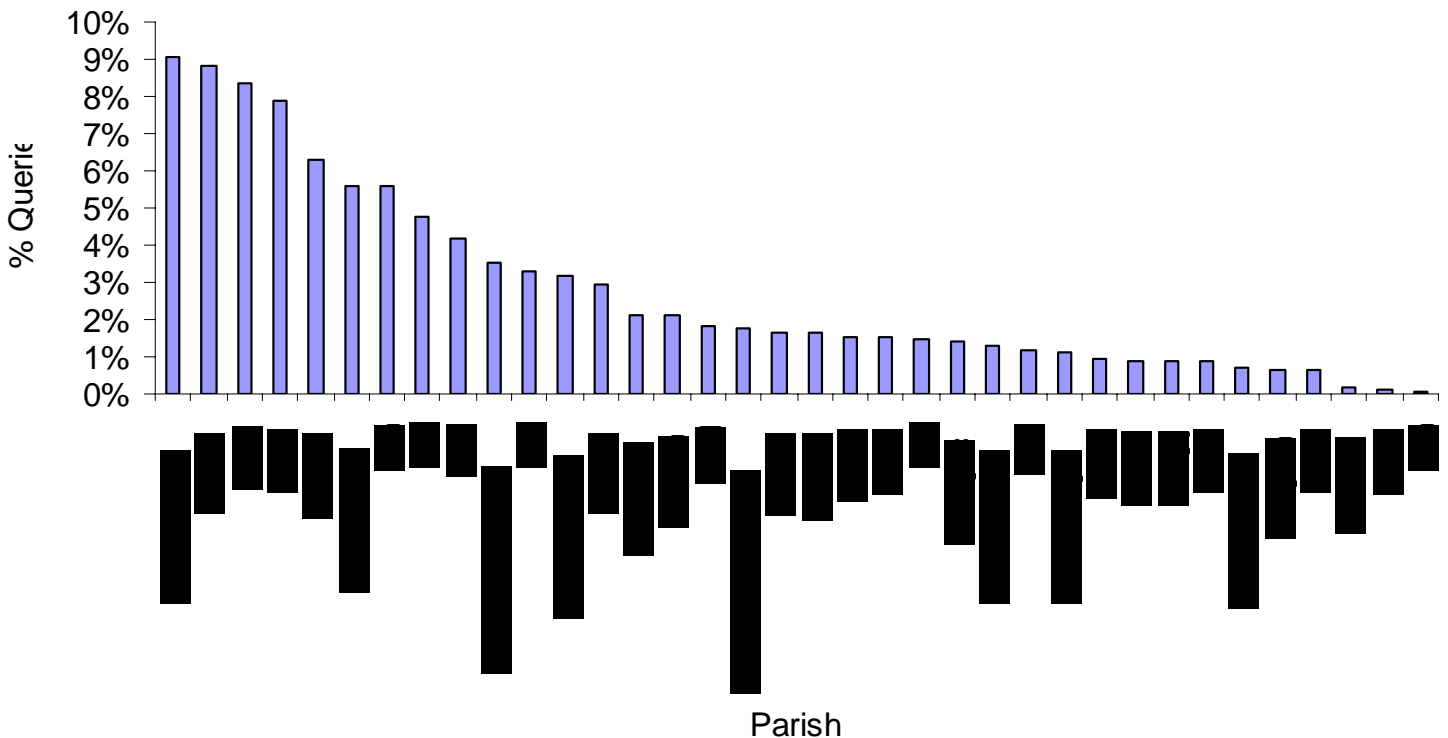
South Cambridgeshire District – CAB Client Statistics
April 2006 to September 2006



Total number of questions asked by South Cambs residents during first 6 months of 2006/07

7,918

Queries Split by Parish

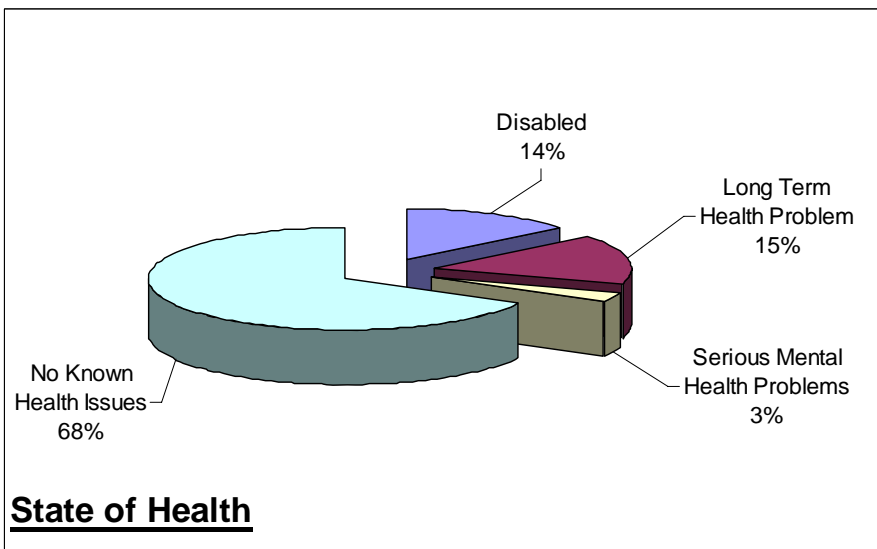
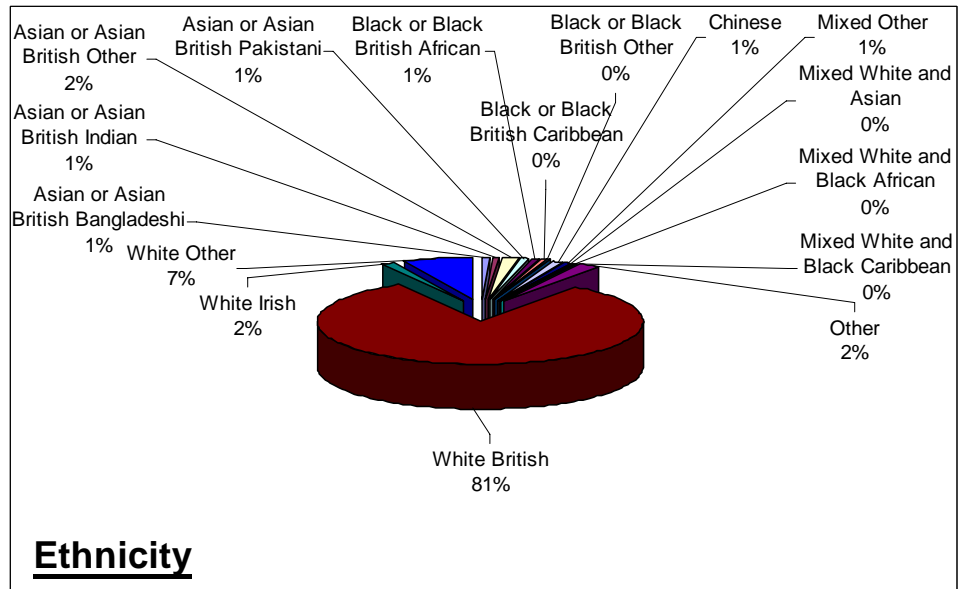
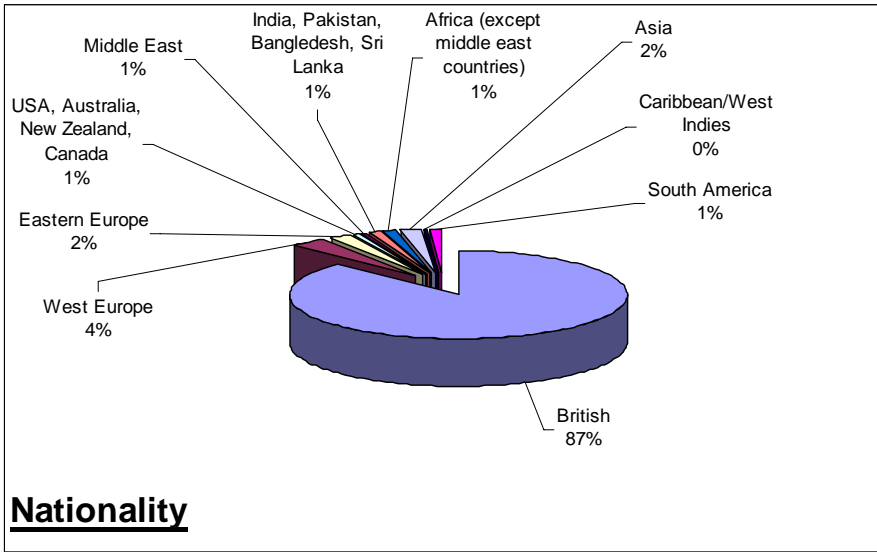


Average number of clients who contacted us from South Cambs in the first six months of this financial year was: **2,036**

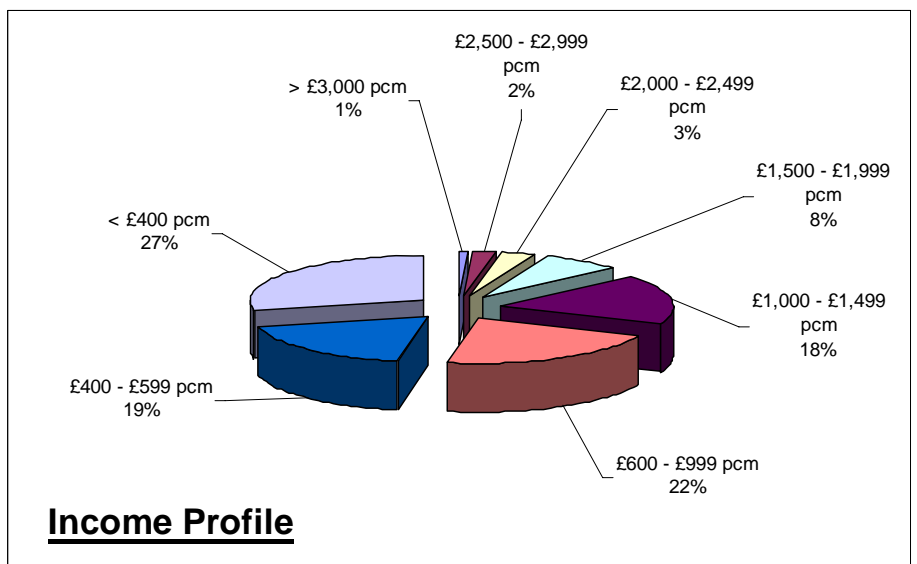
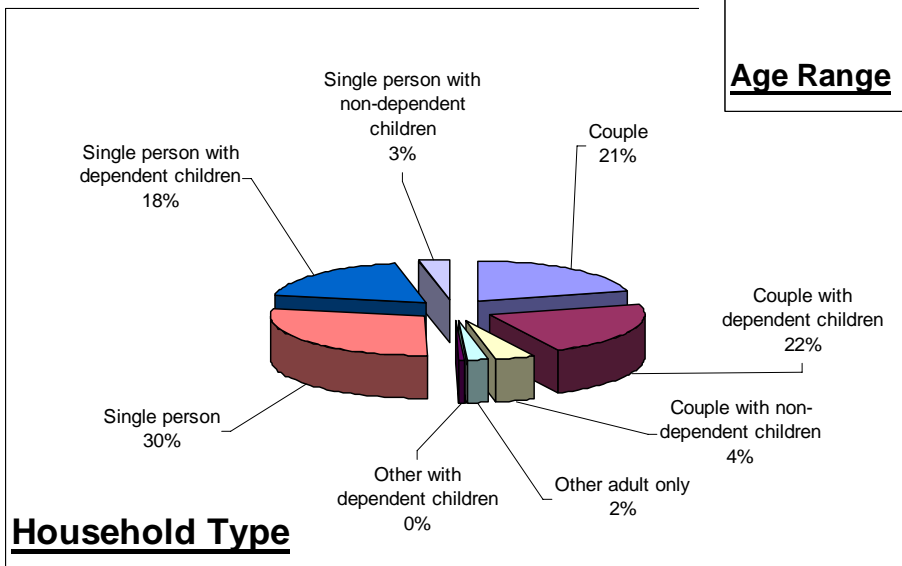
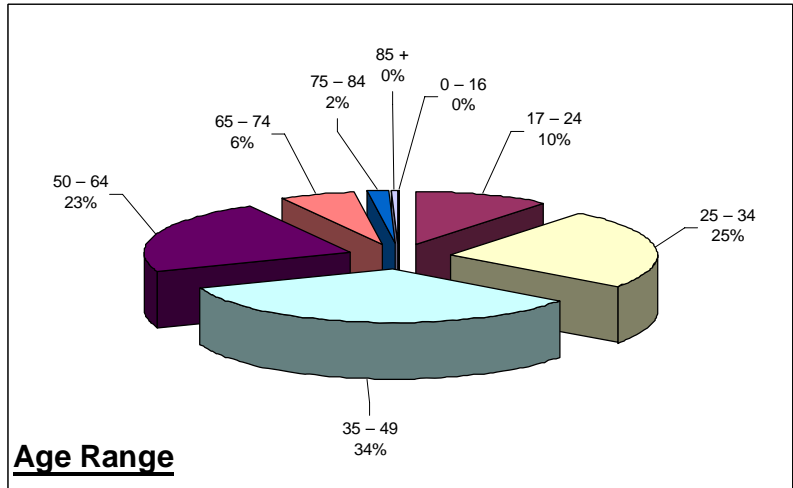
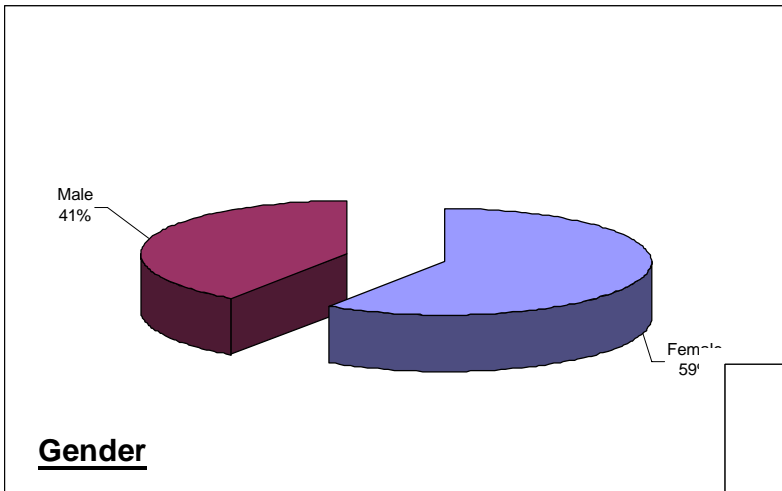
This equates to about **16 clients per day**

Of these about **45%** contacted us either via telephone, email, letter; came to one of our South Cambs Outreaches or benefited from a home visit

South Cambridgeshire District – CAB Client Statistics
April 2006 to September 2006



South Cambridgeshire District – CAB Client Statistics
April 2006 to September 2006



South Cambridgeshire District – CAB Client Statistics
April 2006 to September 2006

Income Maximisation Campaign – In South Cambs

The Income Maximisation Project is jointly funded by Cambridgeshire County Council and the Government Financial Inclusion fund, so that South Cambridgeshire residents gain benefit and debt advice delivered in their community at no extra cost to South Cambs District Council.

The Income Maximisation Team includes 1 full time benefit take up case worker and 1 part time debt caseworker exclusively covering the South Cambs District, plus access to a benefit appeals specialist and 2 more debt specialists based at the Cambridge Office.

Outreaches are run at the following locations

Addenbrookes
Bar Hill
Burwell
Cambourne Library
Fulbourn
Fulbourn Hospital
Girton
Hinchingbrooke Hospital
Histon
Impington
Sawston
Over
Travellers Sits South Cambs
Waterbeach
Willingham

And we also did 39 home visits. Despite the number of outreaches and home visits 28.6% of South Cambs residents still travelled to our Cambridge Office for benefit and debt support.

In the first 6 months of this project our benefit take up workers have applied for £585,886 of new benefit claims for South Cambs Residents of which 36% were either disabled, suffered long term health problems, mental health problems or were vulnerable for reasons of health.

We also helped South Cambs residents write off £254,586 worth of debts providing much need relief from the stress that high levels of debt causes in this region.